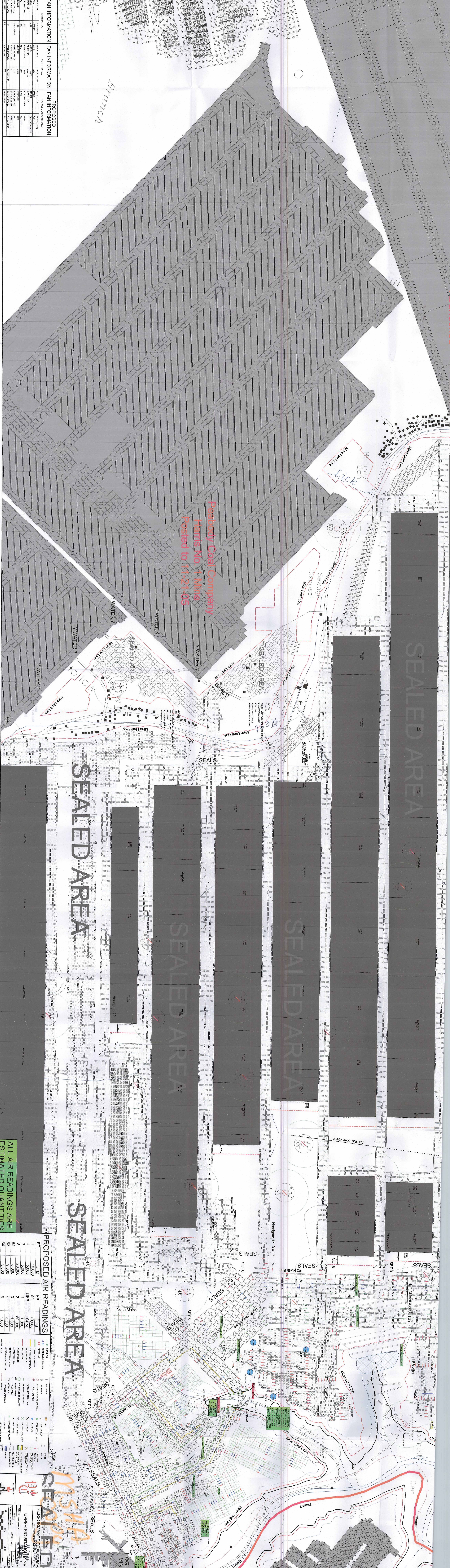


FAN INFORMATION		FAN INFORMATION		PROPOSED FAN INFORMATION	
SIZE 1 TYPE	SOOTY SPINNAKERS	SIZE 1 TYPE	SOOTY SPINNAKERS	SIZE 1 TYPE	SOOTY SPINNAKERS
1	400	1	400	1	400
2	400	2	400	2	400
3	400	3	400	3	400
4	400	4	400	4	400
5	400	5	400	5	400
6	400	6	400	6	400
7	400	7	400	7	400
8	400	8	400	8	400
9	400	9	400	9	400
10	400	10	400	10	400
11	400	11	400	11	400
12	400	12	400	12	400
13	400	13	400	13	400
14	400	14	400	14	400
15	400	15	400	15	400
16	400	16	400	16	400
17	400	17	400	17	400
18	400	18	400	18	400
19	400	19	400	19	400
20	400	20	400	20	400
21	400	21	400	21	400
22	400	22	400	22	400
23	400	23	400	23	400
24	400	24	400	24	400
25	400	25	400	25	400
26	400	26	400	26	400
27	400	27	400	27	400
28	400	28	400	28	400
29	400	29	400	29	400
30	400	30	400	30	400
31	400	31	400	31	400
32	400	32	400	32	400
33	400	33	400	33	400
34	400	34	400	34	400
35	400	35	400	35	400
36	400	36	400	36	400
37	400	37	400	37	400
38	400	38	400	38	400
39	400	39	400	39	400
40	400	40	400	40	400
41	400	41	400	41	400
42	400	42	400	42	400
43	400	43	400	43	400
44	400	44	400	44	400
45	400	45	400	45	400
46	400	46	400	46	400
47	400	47	400	47	400
48	400	48	400	48	400
49	400	49	400	49	400
50	400	50	400	50	400



PROPOSED AIR READINGS	
EP	CFM
1	10,000
2	5,000
3	5,000
4	20,000
5	8,000
6	8,000
7	1,000
8	2,500
9	5,000
10	8,000
11	1,000
12	1,000
13	5,000
14	8,000
15	1,000
16	1,000
17	5,000
18	8,000
19	1,000
20	1,000
21	5,000
22	8,000
23	1,000
24	1,000
25	5,000
26	8,000
27	1,000
28	1,000
29	5,000
30	8,000
31	1,000
32	1,000
33	5,000
34	8,000
35	1,000
36	1,000
37	5,000
38	8,000
39	1,000
40	1,000
41	5,000
42	8,000
43	1,000
44	1,000
45	5,000
46	8,000
47	1,000
48	1,000
49	5,000
50	8,000

ALL AIR READINGS ARE ESTIMATED QUANTITIES

PERFORMANCE COMPARISON UPPER BIG BRANCH MINE

Phase 1 - Mining Consensus